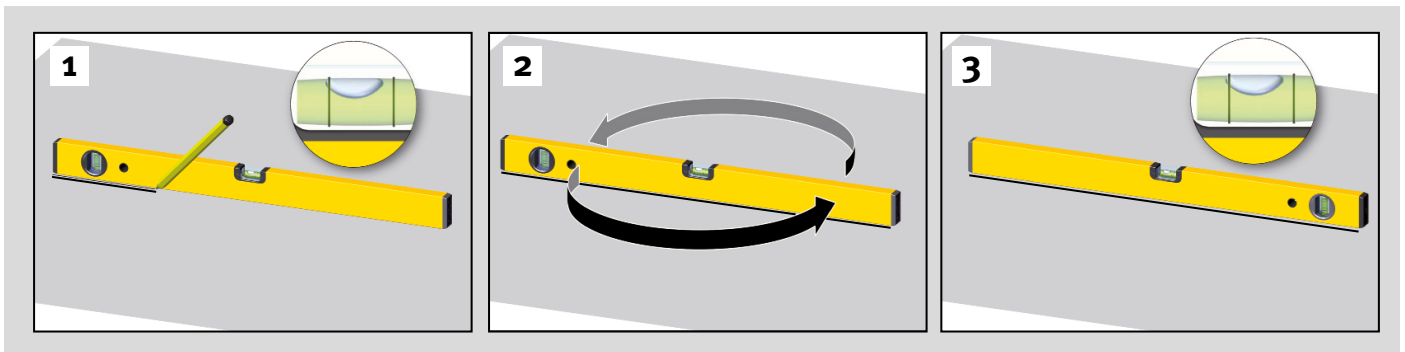


FAQ – How to check your spirit levels

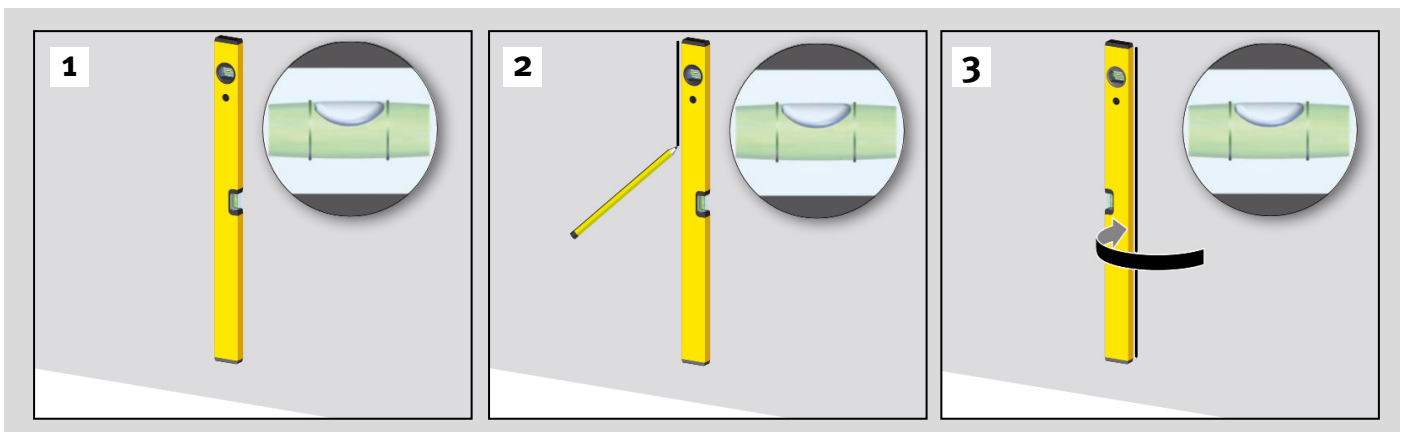
Checking the horizontal vial:

Place the spirit level on a table as if you wanted to complete a measurement (while doing so, the vial bubble does not need to be positioned exactly in the centre). Use a pencil to mark a reference line along the measuring surface without changing the position of the spirit level. Rotate the spirit level by 180° around its own axis and place the measuring surface back on the reference line. If the vial bubble is in the same position as during the first measurement, then the spirit level is in working order. If you notice a difference between the position of the vials, then please get in touch with your retailer or STABILA directly.



Checking the vertical vial:

Align the spirit level in a vertical position on a wall (vial bubble should be in the centre between the two vial rings). Use a pencil to mark a reference line along the measuring surface without changing the position of the spirit level. Rotate the spirit level by 180° around its own axis and place the measuring surface back on the reference line. If the vial bubble is in the same position as during the first measurement, then the spirit level is in working order. If you notice a difference between the position of the vials, then please get in touch with your retailer or STABILA directly.



NOTE:

Please note that a measurement accuracy is specified for every branded spirit level. For this reason, there may be minimal deviations to the vial bubble within the designated tolerance.

The check detailed here can no longer be completed on spirit levels with a bent profile. Damage of this kind is not covered by the STABILA warranty.